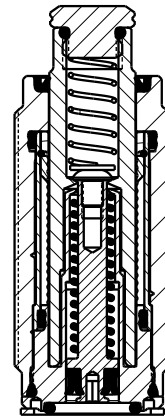




SEE ISI023 FOR SERVICE INSTRUCTIONS.  
LUBRICATE ALL SEALS WITH CLEAN HYDRAULIC OIL  
PRIOR TO ASSEMBLY.  
DO NOT USE SILICONE BASED LUBRICANTS.



APPLY MEDIUM STRENGTH  
THREAD LOCKER (BLUE)  
TORQUE TO 9 Nm  
80 IN-LB

TORQUE TO 1.25 Nm  
11 IN-LB

PLUNGER  
These work supports are fully  
rebuildable to full factory original  
capacity by any authorized Vekttek repair  
facility. All seals can be replaced by  
any authorized repair facility.

BODY ASSEMBLY  
-NOT REPLACEABLE  
TORQUE TO 47.5 Nm  
35 FT-LB

ASSEMBLE LIP  
SIDE TOWARD  
BOTTOM OF PISTON

USE GASKET IF REPLACING 41007114 OR  
USE O-RING (RECOMMENDED) IF ABIDES BY  
ILMV100723 & ILMV100729 DO NOT USE  
BOTH SEALS

NO	QTY	PART NO	DESCRIPTION	STD SEAL KIT	SPRING KIT
1	1	21410076	BHCS, 6-32 x 3/16 SELFLOCK, SST		
2	1	21430022	WASHER		
3	1	23355024	SPRING, COMPRESSION		X
4	1	23355025	SPRING, COMPRESSION		X
5	1	39000069	O-RING, (-903)	X	
6	1	39010054	BU RING, (-116)	X	
7	1	39050008	O-RING, (-014)	X	
8	1	39052057	SEAL, BEVEL, 3/32 X 5/32 X 11/32	X	
9	1	39054035	BU RING, (.157 X .089)	X	
10	1	41040604	BOLT, CONTACT, WS, FA, 6.2KN, LS		
11	1	81010618	PISTON, WS, FA, HC, 2000, LS		
12	1	39V53003	WIPER, PRESS-IN, (.9/16), VBGV	X	
N/A	N/A	60100247	KIT, SEAL, WS, FA, CM, HC, 8.9kN, LS	NOTED	N/A
N/A	N/A	61100224	KIT, SPRING, WS, FA, HC, 2000, LS	N/A	NOTED
N/A	N/A	ISI023	INSTRUCTION SHEET	N/A	N/A

### PARTS LIST



VEKTEK, INC.  
1334 E. SIXTH AVE. P.O. BOX 625  
EMPORIA, KS. 66801 U.S.A.

ASSEMBLIES AFFECTED  
41070616

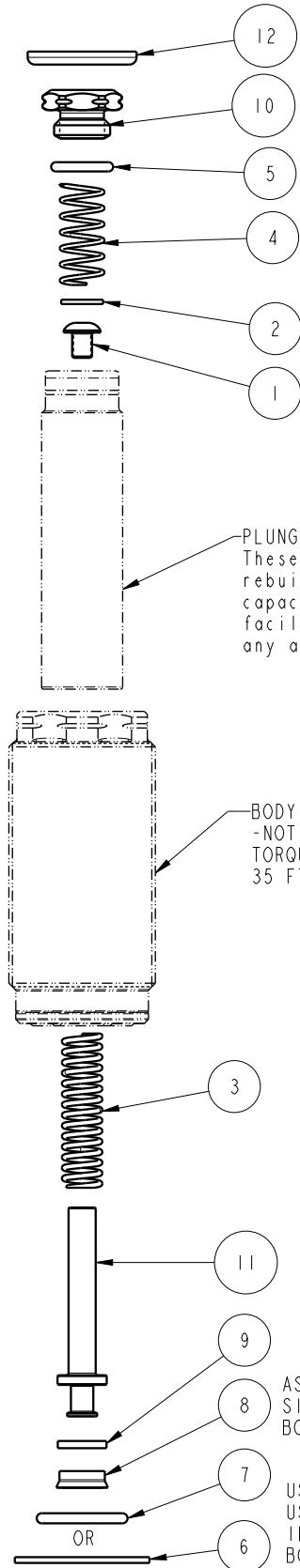
PARTS LIST, ASSY, WS, FA, CM, HC, 8.9kN, LS  
DROP-IN REPLACEMENT FOR 41007114

SIZE  
A MPL1067

REV  
A

SHEET 1 OF 1

FORM FEG035\_PL\_ASIZE, REV. B



A	4631	RELEASE	RLK	2/28/22
REV	IN ACCORDANCE WITH ECN	EFFECTIVE DATE	REVISED BY	DATE
DRW BY:	RLK	<b>DRAWING STATUS: Released</b>		
DATE:	10/5/21	PRODUCTION APPROVED FOR RELEASED STATUS ONLY		